

# Reminder: Take Water Samples

Producers in Phases II/III of the Groundwater Quality Management Program must take water samples during irrigation season for the annual crop reports. The reports are due March 31<sup>st</sup> to allow producers to utilize UNL's nitrogen recommendation for the next growing season.

As producers enter their data, a nitrogen application recommendation form is visible for each field. Although the deadline to submit forms is March 31st, producers must take their water samples now to submit with their forms next spring.

**Your CPNRD Contact: Tricia Dudley (308) 385-6282 or [dudley@cpnrd.org](mailto:dudley@cpnrd.org)**

# Emerald Ash Borer in Kearney



The emerald ash borer (EAB) was recently found in Kearney in a tree located near Pioneer Park. Residents in Kearney with ash trees should begin making plans to either treat or remove the trees. The optimal time for treatment is spring, although professional trunk injections may provide some control even if done in summer.

Because insecticide treatments have drawbacks, trees should be located within 15 miles of Kearney including Gibbon, Minden, Elm Creek, Odessa, Riverdale, Amherst and Axtel. Ash trees left untreated will eventually die from EAB and will need to be removed. More information about the emerald ash borer and recommended trees for replacement can be found at [nfs.unl.edu/nebraska-eab](http://nfs.unl.edu/nebraska-eab).

# COVID-19 Office Update



We appreciate your patience and compliance with COVID-19 guidelines. For your convenience, a secure Drop Box has been installed directly next to our front office door to submit forms, permits and other deliveries. (Do not place cash in drop box.)

The NRD office lobby is open to the public; however, appointments are requested to visit with staff to allow for social distancing guidelines. The use of masks is encouraged to prevent the spread of COVID-19 and are available upon request. Call (308) 385-6282 to schedule an appointment.

# Important Dates

- **January 1** Nitrogen Certification test due
- **March 31** Crop Report forms due at: [cpnrd.gisworkshop.com](http://cpnrd.gisworkshop.com)
- **April 15** CPNRD-Ron Bishop Memorial College Scholarship applications due
- **June 1** Chemigation permit applications due
- **Sept 1 - March 1** Transfer applications accepted for irrigated acres
- **Sept 15** Chemigation re-inspections must be completed
- **Nov 1 - April 1** Tree & Weed Barrier orders accepted
- **November 3** Election Day

To receive the  
*In Perspective Newsletter* by email, send  
your address to: [lee@cpnrd.org](mailto:lee@cpnrd.org)



# Board of Directors

At-Large	Keith Ostermeier, Grand Island
Subdistrict 1	Jay Richeson, Gothenburg   Brian Keiser, Gothenburg
Subdistrict 2	Dwayne Margritz, Lexington   Chris Henry, Cozad
Subdistrict 3	Marvion Reichert, Elm Creek   Steve Sheen, Kearney
Subdistrict 4	Keith Stafford, Kearney   Lon Bohn, Gibbon
Subdistrict 5	Deb VanMatre, Gibbon   Jim Bendfeldt, Kearney
Subdistrict 6	Mick Reynolds, Wood River   Jerry Milner, Grand Island
Subdistrict 7	Jerry Wiese, Grand Island   Ed Stoltenburg, Cairo
Subdistrict 8	LeRoy Arends, Grand Island   Alicia Haussler, Grand Island
Subdistrict 9	Ed Kyes, Central City   Doug Reeves, Central City
Subdistrict 10	Chuck Maser, Grand Island   Barry Obermiller, Grand Island

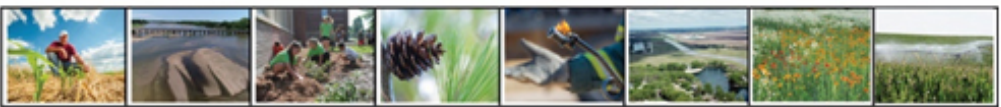
# Staff

General Manager: Lyndon Vogt  
Assistant Manager: Jesse Mintken  
Administrative Assistant: Kelly Cole  
Communications Assist: Brody Vorderstrasse  
Cozad Ditch Manager: Michael Schmeeckle  
Easement Admin Specialist: Michelle Steffen  
Easement Habitat Specialist: Krystal Bialas  
Easement Habitat Specialist: Ele Nugent  
GIS Coordinator: Angela Warner  
GIS Image Analyst: Luke Zakrzewski  
Hydrologist: Brandi Flyr  
Info/Education Specialist: Marcia Lee  
Projects Assistant: Tom Backer  
Range Management Specialist: David Carr

Resources Conservationist: Bill Hiatt  
Resources Conservationist: Shane Max  
Secretary/CPNRD: Deb Jarzynka  
Secretary/NRCS-Grand Island: Marcy Johnson  
Secretary/NRCS-Lexington: Samantha Keith  
Secretary/NRCS-Kearney: Shelly Lippincott  
Secretary/Thirty Mile ID: Marci Ostergard  
Thirty Mile Irrigation District Manager: Jim Harris  
Thirty Mile ID Technician: Mike Ostergard  
UNL/NRD Demo Project Coordinator: Dean Krull  
Water Quality Programs Assistant: Tricia Dudley  
Water Resources Specialist: Dan Clement  
Water Resources Technician: Courtney Widup



Volume 24  
No. 1  
August 2020



# IN PERSPECTIVE NEWSLETTER

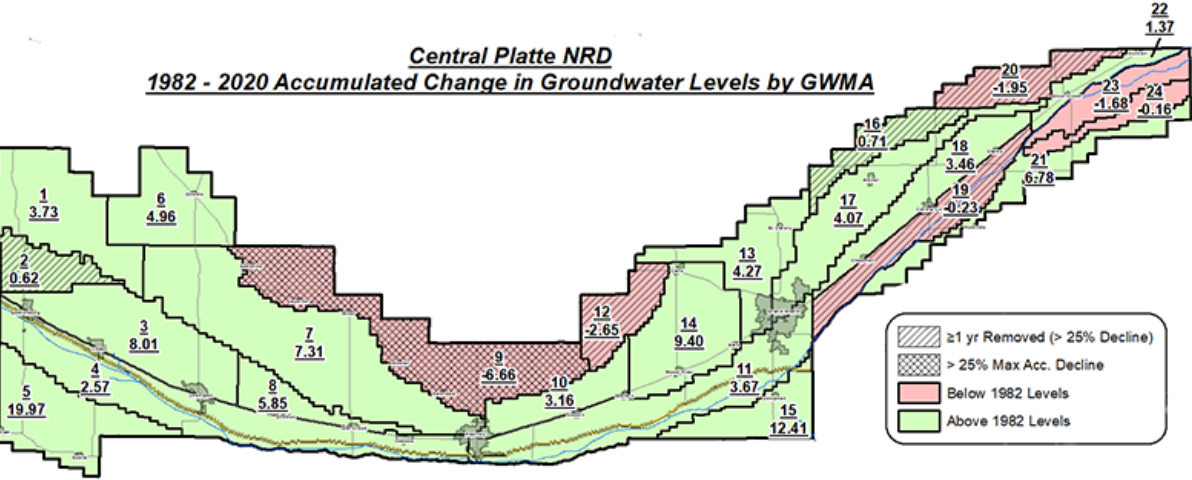
215 Kaufman Ave Grand Island NE (308) 385-6282 [cpnrd.org](http://cpnrd.org)

# Spring Groundwater Levels Continue to Increase

Central Platte NRD's average spring groundwater levels across the District had an accumulated gain of 3.29 feet from spring 1982 to spring 2020. Groundwater levels are averaged from the 413 observation and irrigation wells NRD staff reads annually from mid-April to mid-June; which consists of one well every three miles. Additional observation wells are being installed.

Most of the 24 Ground Water Management Areas (GWMAs) saw increases because of above-average precipitation during 2019 that continued through this spring; as well as a continuation from last year's 2.08' increase. A comparison of the 1982 levels were established as the standard for the Groundwater Management Plan with maximum acceptable declines and a margin of safety calculated for each of the District's GWMAs.

Six of the GWMAs are currently below the 1982 groundwater levels and subject to the 25% decline regulation restricting transfers of irrigated acres into the areas or supplemental wells. In 2012, the NRD's Rules and Regulations began requiring areas to stay in suspension for five years to lessen additional declines. If the water table would fall to 50% of maximum decline, Phase II would go into effect requiring mandatory reductions in irrigated acres. For details on specific areas, contact Luke Zakrzewski at (308) 385-6282 or [luke@cpnrd.org](mailto:luke@cpnrd.org).





# Funding Approved for Flood Reduction Studies in Buffalo & Dawson Counties

Five Natural Resources Districts (NRDs) were selected to receive over \$4.5 million in Watershed Flood Prevention & Operations (WFPO) funding from the USDA Natural Resources Conservation Service (NRCS). This funding will be directed towards developing watershed plans in the Central Platte, Upper Niobrara-White, Middle Niobrara, Lower Big Blue, and Lower Elkhorn NRDs.

Central Platte NRD received funding to complete a plan for Elm and Turkey Creek Watershed. The grant will fund 100% of the cost of completing the plans. The first step of the two-year planning phase is to develop Environmental Assessments for each watershed. The Elm and Turkey Creek Watershed project area covers 106,185 acres in Dawson and Buffalo counties.

Lyndon Vogt, CPNRD general manager, said “The WFPO funding from NRCS will allow the NRD to identify measures or structures that would reduce flooding within these communities that have a history of flooding and have been greatly impacted by flood events in the last two years.”

State Conservationist Craig Derickson said, “We look forward to working with the NRDs on these new watershed projects. We saw how established watershed projects sprang into action last spring following the bomb cyclone reducing flood damages and protecting natural resources. These new projects plan to provide more benefits to more areas across Nebraska.”



Flood risk reduction structure in Buffalo Creek Watershed. Photo taken Oct 2019.

In February, Central Platte NRD received two additional WFPO grants to develop watershed plans on the Lower Wood River Watershed which includes portions of Buffalo, Hall, and Merrick counties; and the Spring and Buffalo Creek Watershed in Dawson County. These plans are currently under contract.

# NRD Pollinator Activity @ Raising Nebraska



The Nebraska State Fair won’t look quite the same this year because of COVID-19 restrictions; however, you will have the opportunity to learn about pollinators at the Nebraska’s Natural Resources Districts activity in the Raising Nebraska building. Quiz yourself and learn about Nebraska’s pollinators and pollinator plants. The activity will be set up each day of the Fair August 28<sup>th</sup> - September 7<sup>th</sup>.

Afterwards, step outside to see pollinators in-person at the GI Groundwater Guardian/Central Platte NRD Outdoor Learning Area. The learning area features native plants in the rain garden and bioswale, Buffalo grass, a gazebo with attached rain barrel, a cedar tunnel, tepee with scarlet pole beans, eagles nest replica, native trees, and a walking trail through the native prairie.

The Outdoor Learning Area is open year-round to the public and has signage about vegetation and efficient water uses, natural filtration techniques, and the Ogallala Aquifer.

# New Staff Spotlight

**Brody Vorderstrasse** was hired as the new joint Communications Assistant for the Central Platte NRD, the Natural Resources Conservation Service, and the Rainwater Basin Joint Venture.

Originally from Glensvil, Nebraska, Brody grew up participating in 4-H and enjoys hunting. In 2017, he graduated from UNL with a degree in Fisheries & Wildlife and a minor in Animal Science. After college Brody was employed with *Midwest Whitetail*, *The Hunting Public* online hunting shows and Nebraska Game & Parks Commission as a videographer. He also produced podcasts, social media content and edited video blogs.

Brody said he’s excited to work with the three organizations “who do a lot of good for Nebraska’s natural resources” and he looks forward to showcasing Nebraska’s producers and their work.”

Contact Brody (308) 385-6282 brody@cpnrd.org



# Research Interseeding Cover Crops at V4-V6

Central Platte NRD’s Demonstration Project has looked at different methods of planting cover crops for 36 years. Our most recent plots interseeded cover crops into commercial corn at V4-V6 (vegetative growth stage) to provide producers information on which species work best in this growing environment. During these stages the uppermost ear and tassel is initiated and plants have four to six collared leaves.

Interseeding gives the cover crop the opportunity for establishment prior to corn canopy, allowing better production of biomass to move soil health in a positive direction. The goal of the project is to introduce producers to interseeding as an option for cover crop establishment.

The Seim Family, local producers, have partnered with UNL and CPNRD to research the different interseeding procedures. Throughout the six-year research period planting methods have changed from broadcasting, to utilizing surplus equipment for seeding, and purchasing an interseeding implement.



Each year, several different mixes are planted in strip plots. Traditional species in the mixes include cereal rye, oats, turnips, radishes, and hairy vetch. Some of the not so traditional species include okra, pumpkin, phacelia and forage soybeans. The research evaluates which species emerge and which tolerate a shaded environment after crop canopy closure.

Many interseeding questions that we receive and have incorporated into the research are questions regarding heat and availability of sunlight. To monitor both, logging equipment has been installed to collect the temperature and light intensity within the canopy and within the alleyway.



Watch videos of the 2019 and 2020 plots at [cpnrd.org/cover-crops](http://cpnrd.org/cover-crops) and see daily photos taken from our logging equipment at <http://unl.fieldeye.eu>.

To learn more about interseeding cover crops at different stages, contact Dean Krull at (402) 469-0155 or [dkrull1@unl.edu](mailto:dkrull1@unl.edu).