

Visit the NRDs @ Nebraska State Fair

Hey - why not enjoy some sand while you're at the Nebraska State Fair? Nebraska's Natural Resources Districts (NRDs) will have a Stream Table (Sandbox) set up for you. Playing in the sand while learning what makes water move in a watershed. Participate in making stream flows, energy, and learn about different types of river systems.

Find us near the Gazebo in the Family Fun Zone at the Groundwater Guardians' Outdoor Learning Area.

NRD staff from across the state will be presenting the Stream Table for the duration of the Fair from August 24th - September 3rd.



NEW at the Outdoor Learning Area---the Grand Island Groundwater Guardian Team and CPNRD have a life-size Bald Eagle's nest example on display with some fun facts about Bald Eagles. Also use new stepping stones embedded with 12 wildlife tracks to connect from UNL's Raising Nebraska area to the Groundwater Guardians rain garden, newly seeded Buffalo grass, and the native prairie areas.

Hope to see you at the Nebraska State Fair!



NRDs @ Husker Harvest Days

Be sure to pick up your native seed packet and Colorado Blue Spruce seedling from the Natural Resources building at Husker Harvest Days again this year. Staff from several NRDs will be at Husker Harvest Days to promote the NRDs Conservation Tree Program, Native Prairie Project, and to answer any questions you may have about Nebraska's natural resources.

\$7.5 million in improvements have been made to HH Days including paved roads, concrete floors, newer sewer system, PA system, security fence, and more. See you September 11th-13th in Grand Island.

New Cost Share \$\$ for Burn Preparation



A new cost share program has been implemented to help prepare pastures for burning to encourage safer prescribed burn practices. Other objectives for the program are to conserve native grasslands for sustained grazing and increase wildlife habitat.

The cost-share payment will cover 50% of tree removal and fireline preparation for up to \$75/acre. A maximum of \$10,000 is available per landowner, one application per lifetime. Top priority will be given to pasture applications where the goal is to do a prescribed burn.

Your CPNRD Contacts: David Carr and Kelly Cole (308) 385-6282.

To learn more- visit



Drought Management Planning

Central Platte NRD is taking proactive steps to reduce impacts of future drought events. One of these steps is the development of a Drought Management Plan with assistance from JEO Consulting Group, Inc. The plan will build on previous efforts by the NRD including: the Groundwater Management Plan, Integrated Water Management Plan, and Hazard Mitigation Plan. The objectives are to identify District vulnerabilities, create a methodology for monitoring drought conditions, and identify processes to respond to and manage the impacts of future drought events.

Drought is one of the costliest hazards that occur in Nebraska, resulting in over \$72 million of losses within the NRD area since 2000 (National Centers for Environmental Information). As drought impacts large geographical areas that cross political boundaries, the NRD is in a unique position to address this hazard. This project will ultimately assist the NRD in water resources management and lead to a more sustainable and stable water supply for all users across the district.

Central Platte NRD was awarded a Water Sustainability Fund grant from the Nebraska Natural Resources Commission to assist in funding the project. Completion date is mid-2019.

Your CPNRD Contact: Jesse Mintken (308) 385-6282.

Board of Directors

At-Large Keith Ostermeier, Grand Island
1. Jay Richeson, Gothenburg
Brian Keiser, Gothenburg
2. Dwayne Margrit, Lexington
Chris Henry, Cozad
3. Marvion Reichert, Elm Creek
Steve Sheen, Kearney
4. Bob Schanou, Shelton
Keith Stafford, Kearney
5. Deb VanMatre, Gibbon (Secretary)
Jim Bendfeldt, Kearney (Chairman)

Staff

General Manager: Lyndon Vogt
Administrative Director: Dianne Miller
Assistant Manager: Jesse Mintken
Biologist: Mark Czaplewski
Cozad Ditch Manager: Michael Schmееckle
Data Compliance Officer: Sandy Noecker
GIS Coordinator: Angela Warner
GIS Image Analyst: Luke Zakrzewski
Hydrologist: Brandi Flyr
Information/Education Specialist: Marcia Lee
Programs Coordinator: Kelly Cole
Projects Assistant: Tom Backer
Range Management Specialist: David Carr

6. Jerry Milner, Grand Island
Mick Reynolds, Wood River (Vice-Chairman)
7. Jerry Wiese, Grand Island
Ed Stoltenberg, Cairo
8. LeRoy Arends, Grand Island
Alicia Haussler, Grand Island
9. Ed Kyes, Central City
Doug Reeves, Central City
10. Charles Maser, Grand Island
Barry Obermiller, Grand Island

Resources Conservationist: Tricia Dudley
Resources Conservationist: Shane Max
Secretary/CPNRD: Deb Jarzynka
Secretary/NRCS-Central City: Sara Carlson
Secretary/NRCS-Grand Island: Marcy Johnson
Secretary/NRCS-Lexington: Samantha Keith
Secretary/NRCS-Kearney: Shelly Lippincott
Secretary/Thirty Mile Irrigation District: Marci Ostergard
Thirty Mile Irrigation District Manager: Jim Harris
Thirty Mile Irrigation District Technician: Mike Ostergard
UNL/CPNRD Demo Project Coordinator: Dean Krull
Water Resources Specialist: Dan Clement
Water Resources Technician: Courtney Widup

Nebraska's NRDs: Protecting Lives | Protecting Property | Protecting the Future



Volume 21
No. 2
August 2018



IN PERSPECTIVE NEWSLETTER

215 Kaufman Ave Grand Island NE

(308) 385-6282

cpnrd.org

Spring Groundwater Levels Show Increase

Static accumulated groundwater levels are up 0.54 feet since the spring of 2017 in the Central Platte NRD.

Levels are determined by measurements taken by CPNRD staff from 430 designated wells each year. Although the annual levels increased this year, the

groundwater levels from 1982 to 2018 are down 0.31 feet. See map below for results for each Ground Water Management Area.

The 1982 levels were established as the standard for CPNRD's Groundwater Management Plan with maximum acceptable declines and a margin of safety calculated for each of the District's 24 Ground Water Management Areas (GWMA).

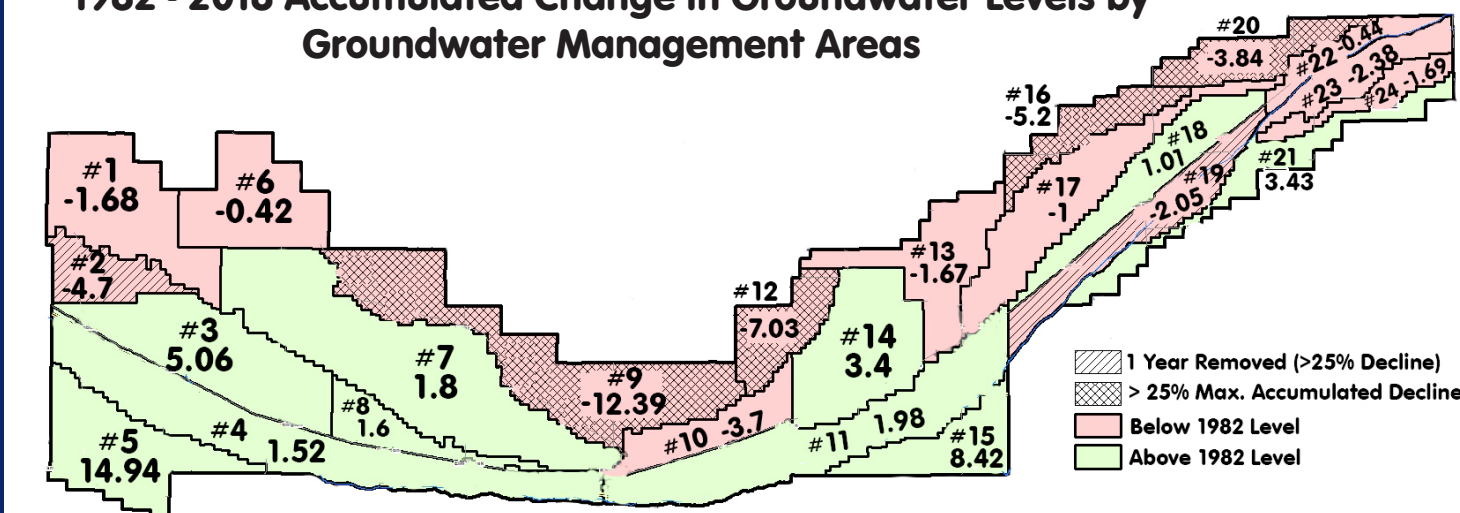
Ground Water Management Area #9 continues to show declines annually, with a decline of 12.39' in Buffalo County north of Kearney. This management area has had steady declines since 2000, dropping another quarter-foot since last spring despite timely rains during the 2017 growing season.

If the water table would fall to 50% of the maximum decline, Phase II would go into effect requiring mandatory reductions in irrigated acres. Since the area extends into the Lower Loup NRD, the two NRDs are jointly studying the groundwater declines more closely.

CPNRD serves 11 counties including all of Dawson County and parts of Frontier, Custer Buffalo, Hall, Howard, Nance, Merrick, Hamilton, Platte, and Polk counties.

Interactive maps available at <http://cpnrd.gisworkshop.com>.

1982 - 2018 Accumulated Change in Groundwater Levels by Groundwater Management Areas



Integrated Water Management

BASIN-WIDE MANAGEMENT

Natural resources districts in the Platte Basin and the Nebraska Department of Natural Resources (NeDNR) are working together to protect and preserve Platte River water rights of existing users for surface water and groundwater.

In 2009, a Basinwide Integrated Management Plan (IMP) was developed and is currently being updated with future goals. As management efforts evolve across the basin, we want to ensure that the state is in compliance with the Nebraska New Depletions Plan (NNDP) included within the Platte River Recovery Implementation Plan (PRRIP).

The first ten-year increment will end in May 2019. To guide the second increment planning process, a Public Participation Plan Development Committee met from August 2015 through January 2016. The committee's goal was to create a robust, understandable, transparent approach for the planning process. To allow sufficient time for the individual integrated management plans to be revised, a draft plan is expected to be available by August 31, 2018. The target goal for the completion of the second increment basin-wide plan is September 2019.

DISTRICT MANAGEMENT

On August 14th, CPNRD and the NeDNR held the first of four stakeholder meetings to review and update the CPNRD's Integrated Management Plan. The goal of the Plan is to set objectives to incrementally reduce the difference between current, fully, and over appropriated levels of development within the District.

CPNRD has complied with the law by putting a stay on new development of irrigated acres and by initiating several projects that increase groundwater recharge and enhance streamflows. Although current goals are being met, new offset requirements will be required in the new Plan. During stakeholder meetings, participants will be briefed on details of the current Individual IMP and will be asked to help the NRD to update it. Anyone with an interest in water issues is encouraged to be a participant in this series of meetings. Upcoming meetings will be held in Kearney, Nebraska, and are scheduled for September 18, November 13, and January 15, 2019. To submit your name for consideration, contact **Lyndon Vogt, CPNRD general manager, at (308) 385-6282 or email vogt@cpnrd.org.**

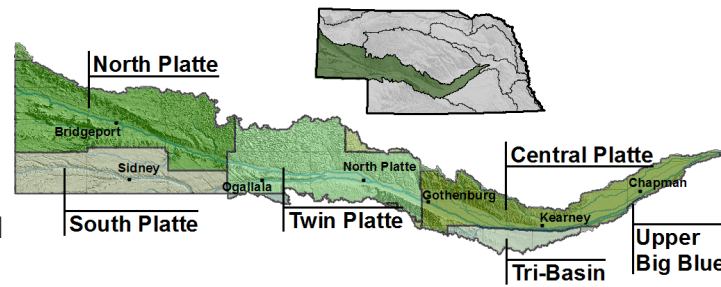
Current stakeholders represent both surface water and groundwater interests such as irrigators, city utilities, power districts, economic development, and banking representatives. The stakeholder group will work towards a draft plan with a proposed completion date of May 2019. With both of these plans, we seek to ensure a balance between water supplies and water uses through science-based technical expertise, planning, and coordination of efforts with stakeholders (you).



Employee Spotlight: Brandi Flyr, Hydrologist

Brandi was hired as hydrologist in June 2017 and received her PhD in Geosciences from UNL in 2009. Flyr is responsible for data, surface and groundwater studies, and analyses related to water quantity and quality throughout the District. Typical analyses includes statistical, time series, geospatial, groundwater models, and surface water operations models to evaluate and track different management alternatives such that the District can meet its various surface and groundwater goals.

The Platte River Cooperative Hydrology Study (COHYST) requires much of her time as she works with others to develop the groundwater database and regional groundwater models for the Platte River Area above Columbus, NE. She serves on committees for the Conjunctive Management Study, the Platte River Recovery Implementation Program, and the Water Action Plan.



Platte River near Central City, Nebraska.
Photo taken July 19, 2018.

Chemigation Systems Must Be Inspected by Sept. 15

Chemigation, also known as fertigation, utilizes an irrigation system to apply fertilizer and/or pesticides to growing crops. Chemigation systems need to be inspected before September 15, 2018, to meet State and District's requirements. Inspection requires a complete startup and shutdown of your irrigation system.

CPNRD will suspend and ***will not*** renew any chemigation permits that haven't met inspection requirements by September 15th, so it is very important that your system is inspected before you turn your well off. If you have a new system and it is not inspected ***this*** growing season, the State will not allow you to carry it over the next year and you will forfeit your permit fee.

Your CPNRD Contacts: *Inspection appointments are available until September 15th* by contacting David Carr or Dan Clement at (308) 385-6282. If your system is in Dawson, Custer, or Frontier counties; contact Shane Max at (308) 380-8943. We will attempt to give you next-day service.

Reminder to Take Water Samples

Producers in Phases II/III of the Groundwater Quality Management Program are reminded to take water samples for your annual online crop reporting form. The report for fall and spring are due March 31st at ***cpnrd.gisworkshop.com***. Several producers have not submitted their forms for 2018. If you are one of these producers, be sure to complete these right away to avoid violation procedures.

The Groundwater Management Program implemented 30 years ago by Central Platte NRD is showing improvements. Average nitrate levels have dropped 25% and we have sufficient water for domestic, municipal, and wildlife uses. Management decisions to put stays on new wells and new irrigated acres, efforts to improve hydrologic conditions, and integrated groundwater and surface water management for the Platte River will protect our groundwater quality and quantity for the future.

Your CPNRD Contacts: Sandy Noecker and Tricia Dudley (308) 385-6282.

Public Hearing for Rules & Regulation Changes

PUBLIC HEARING 1:00 p.m. Thursday, September 27, 2018, at the Central Platte NRD (CPNRD) office

CPNRD is proposing changes to the Rules & Regulations for the Groundwater Management Plan, originally adopted in 1987 and revised periodically for the enforcement of the Nebraska Groundwater Management and Protection Act. Below are proposed policy changes.

PROPOSED CHANGES

- **A.2.36.4** Remove: "New wells that would irrigate lands not irrigated as defined by Section B Rule 2 provided that (1) a) the same amount of water that would be depleted from the river over a 50-year period from consumptive use of groundwater withdrawals are retired from use (offset), and b) the offset occurs at the same time, rate and location as the depletion as identified by the Cooperative Hydrologic Study (COHYST), and (2) any other requirement or condition the board may request.

- **B.4.1** Add timeline for transfer applications to be accepted between September 1st - March 1st for irrigated acre transfers. Exceptions will be considered for land purchased 90 days after March 1st.

- **B.4.2.5** Change application correction time limit from 120 days to 60 days of the return date.

- **B.4.4.1** Change the number of years, from two consecutive years to five consecutive years, that a sub-area would stay under the transfer limit rule to not allow transfers if it meets or exceeds 25 percent of the maximum acceptable decline as determined by spring water levels.

A complete list of proposed changes are available for inspection or by calling CPNRD at (308) 385-6282 and available for download at the CPNRD's website at cpnrd.org.

Project Spotlight: Wood River Flood Control Project

CPNRD is comprised of 27 municipalities with varying flooding challenges. The Wood River Flood Control Project is one of the NRD's largest projects with a levee system comprised of 12.6 miles of embankment. Built along Wood River in central Hall County, it reduces risk of flooding to portions of Grand Island, Hall & Merrick counties. The U.S. Army Corps of Engineers (USACE) constructed the levee system in the early 2000s and the project was completed in 2004.

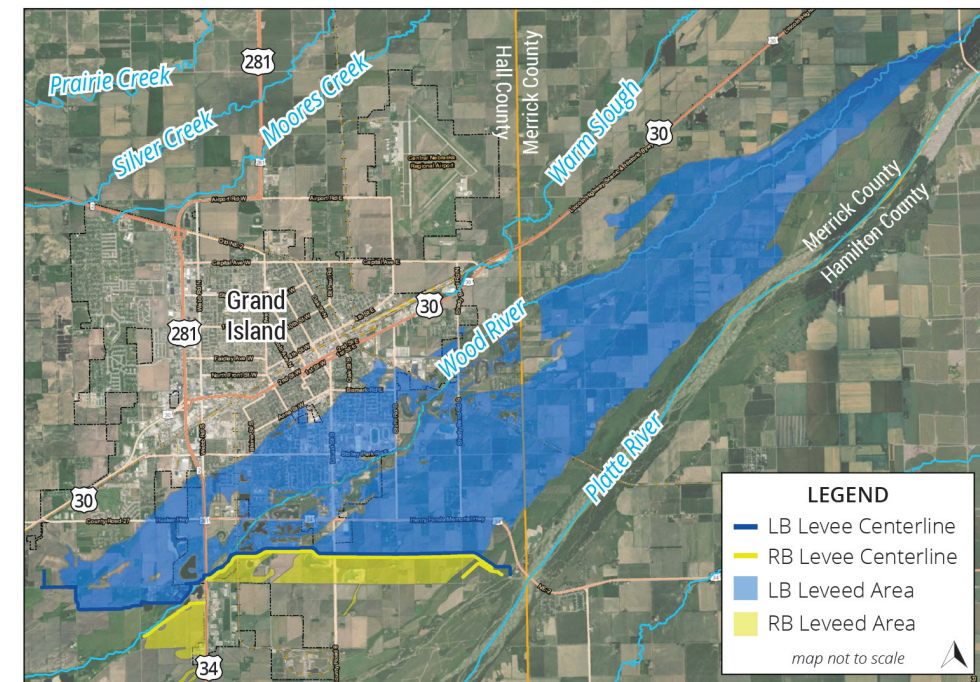
A Reduced Risk of Flooding

According to the USACE National Levee Database, the Left Bank Levee System provides flood risk reduction for 15,514 acres of land ranging from farmland to developed residential, commercial, and industrial land uses. This includes approximately 9,360 people and 3,919 buildings, of which 3,655 are residential. The Right Bank Levee System provides flood risk reduction for an additional 1,337 acres of land consisting of mostly farmland. This includes approximately 120 people and 45 structures, of which 39 are residential.

FEMA's revision of floodplain maps removed close to 7,000 acres of land out of the flood zones and the need for flood insurance in southern Grand Island. CPNRD is responsible for operating and maintaining the levee system to federal standards. Many of CPNRD's efforts are described at cpnrd.org/flood-control/.

What is a levee?

The National Flood Insurance Program defines a levee as a man-made structure, usually an earthen embankment, designed and constructed to contain, control, or divert the flow of water so as to reduce risk from temporary flooding.



Left Bank (LB) Levee System

- Located on north side of Wood River.
- 7.9 miles long
- Gated diversion structure & 6 drainage structures.

Right Bank (RB) Levee System

- located on the south side of Wood River
- 4.7 miles long
- 9 drainage structures.

Fun Fact!

The Right Bank Levee System is one foot shorter than the Left Bank Levee System, so the Right Bank levee system would overtop first if the capacity of the combined levee system were exceeded.

While the levee system significantly **reduces** flood risk, **it cannot eliminate it**. There are several things YOU can do to manage the "residual flood risk," or the risk that the levee system cannot eliminate:

- **Know Your Risk:** Use the National Levee Database and the Federal Emergency Management Agency's Map Service Center to determine your flood risk.
- **Consider Buying Flood Insurance:** Buying flood insurance helps ensure that your home and belongings are insured in case of damages from flooding.
- **Create an Emergency Preparedness Kit:** Create an emergency preparedness kit for you and your family for when severe weather and flooding occur and take time to make an evacuation plan.

This project, and many other across the state, recognize the importance of flood control projects within a community and show your tax dollars at work.

Your CPNRD Contact: Jesse Mintken (308) 385-6282 or mintken@cpnrd.org.