

Nebraska Children's Groundwater Festival

Central Platte NRD coordinates the annual Nebraska Children's Groundwater Festival at Central Community College and College Park in Grand Island. The goal of the festival is to promote groundwater stewardship by providing the students of Nebraska knowledge to help them make personal choices about protecting groundwater quality and conserving groundwater use.

This year the festival was held on May 10th and had nearly 900 fourth and fifth-grade students in attendance. Each school attends five in-depth classroom activities, a stage show, and the Exhibit Hall tent to enjoy groundwater games and booths. There were 46 individuals and agencies that presented. Water educators and experts present stage shows, in-depth classroom activities and outside Exhibit Hall activities.

SCHOOLS IN ATTENDANCE

Axtell Elementary, Bryan & Pershing of Lexington, Central City Elementary & Nebraska Christian, Central Valley-Wolbach, Good Shepard Lutheran of Lincoln, Jefferson, Lincoln, Seedling Mile & Wasmer of Grand Island, McDaid-North Platte, New Hope Christian-Cairo, Overton Elementary, St. Marys-Ord, St. Michaels-Albion, St. Paul Elementary, Wood River Elementary

FUN FACTS

18 schools attended from 13 towns/cities across the state; including 848 students & 46 teachers. Largest school attending: Pershing of Lexington with 184 students. Smallest school attending: Good Shepard of Lincoln with 7 students. Traveled farthest: McDaid of North Platte, a two-hour trip.



Bob Manley Jr. presents "Febold Feboldson" for the last time. Manley has been portraying Febold as Nebraska's own Tall Tale Hero since 1996. Each year, students overwhelmingly selected his high energy class as one of their favorites.

Manley incorporated students in the presentations to help him act out his tales, while he taught the "real" history of groundwater and Nebraska.

HISTORY: The festival is intended to supplement groundwater education that students receive through their school curriculum by providing an event where professionals personally teach students how they work with water in their profession. This was the first groundwater festival to be formed, with over 30,000 students educated since 1988. The Nebraska Children's Groundwater Festival has been replicated in 41 states in the U.S.A., Mexico, Canada, India, & the United Kingdom.

SPONSORS: Central Platte NRD is the main sponsor of the event by providing \$10,000 in financial support and two staff members (Kelly Cole and Marcia Lee) that coordinate the event. The following donors provide additional support to allow students to attend the festival at no cost:

City of Grand Island Utilities, Fred Otradovsky, Kaufmann-Cummings Foundation, Case IH, a brand of CNH Industrial, CHI Health, Grand Island/Hall Co Visitors Bureau, Lee's Family Restaurant, Olsson Associates, Pepsi Bottling Group of Grand Island, Agricultural Services Inc., Ashton State Bank, Aurora Cooperative, Chief Industries Inc., Copycat Printing & Signs, Donna Wanitschke, Eakes Office Plus Inc., Hy-Vee, Grand Island Abstract Escrow & Title Co., Kiwanis A.M. Club, Kiwanis Club of Grand Island, Pioneer Hi-Bred International, Robinson Water Well Drilling, Wenzl Construction Co Inc., Zanadu Inc/Arbys, Coca-Cola of Grand Island, Grand Island Surgery Center, Ken Gnadt, Levanders, Middle Niobrara Natural Resources District, Orscheln Farm & Home, Roger and Julie Frandsen, Virginia Good

IN THIS ISSUE

- Front** Project Update: Upper Prairie/Silver/Moores
- Pg. 2** Groundwater Exchange Results, Chemigation Season...Are You Ready?
- Pg. 3** 2016 Spring Prescribed Burns Successful
- Pg. 4** Stakeholders to Begin Second Increment IMP, Lake Helen Gets New Life
- Pg. 5** Nebraska Children's Groundwater Festival

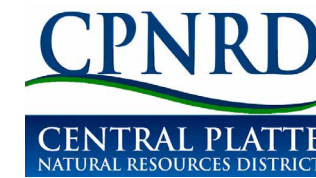
CPNRD LOGO UPDATED

Our board and staff recently selected a new logo to represent the Central Platte NRD. The new logo is an updated version of the logo designed in 1972 and adds the color green, which is more representative of the various responsibilities managed by the NRD.

PAST LOGO



NEW LOGO



Nebraska's NRDs: Protecting Lives • Protecting Property • Protecting the Future

Board of Directors

SUBDISTRICT / DIRECTORS

At-Large Charlie Bicak, Kearney

1. Jay Richeson, Gothenburg
2. Dwayne Margritz, Lexington
3. Marvion Reichert, Elm Creek
4. Keith Stafford, Kearney
5. Deb VanMatre, Gibbon
6. Mick Reynolds, Wood River
7. Jerry Wiese, Grand Island
8. LeRoy Arends, Grand Island
9. Ed Kyes, Central City (Chairman)
10. Chuck Maser, Grand Island (Treasurer)

- Brian Keiser, Gothenburg
- Chris Henry, Cozad
- Steve Sheen, Kearney
- Bob Schanou, Shelton
- Jim Bendfeldt, Kearney (Vice-Chair)
- Jerry Milner, Grand Island
- Ed Stoltenberg, Cairo
- Alicia Haussler, Grand Island
- Ladd Reeves, Archer
- Barry Obermiller, Grand Island (Secretary)

Staff

General Manager: Lyndon Vogt
Assistant Manager: Jesse Mintken
Data Compliance Officer: Sandy Noecker
GIS Coordinator: Angela Warner
Information/Education Specialist: Marcia Lee
Manager Thirty Mile Irrigation Dist: Jim Harris
Projects Assistant: Tom Backer
Resources Conservationist: Shane Max
Secretary-Central Platte NRD: Deb Jarzynka
Secretary-NRCS: Samantha Keith, Lexington
Secretary-NRCS: Shelly Lippincott, Kearney
Technician Thirty Mile ID: Mike Ostergard
Water Resources Specialist: Dan Clement

Administrative Director: Dianne Miller
Biologist: Mark Czaplewski
Engineering Hydrologist: Duane Woodward
GIS Image Analyst: Luke Zakrzewski
Manager-Cozad Ditch: Bill Jacobson
Programs Coordinator: Kelly Cole
Range Management Specialist: David Carr
Resources Conservationist: Tricia Dudley
Secretary-NRCS: Marcyne Johnson, G.I.
Secretary-NRCS: Sara Carlson, Central City
Secretary-Thirty Mile Irri Dist: Marci Ostergard
UNL/CPNRD Demo Project Coord: Dean Krull

Central Platte NRD 215 Kaufman Ave Grand Island NE 68803 T: (308) 385-6282 www.cpnrd.org

In Perspective

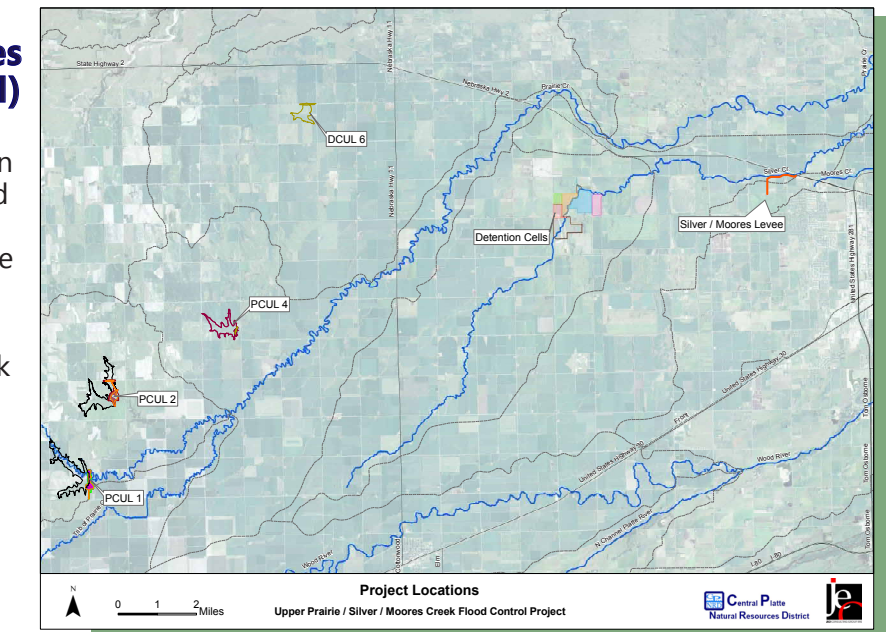
Central Platte Natural Resources District

PROJECT UPDATE

Upper Prairie/Silver/Moores Flood Control Project (PSM)

The Central Platte NRD began coordinating and managing design and construction of the PSM Flood Control Project in 2005. When completed, this project will provide many benefits, including:

- protect northwestern Grand Island from Prairie and Silver Creek flooding.
- reduce future flooding damages to crops, properties, and other infrastructures.
- eliminate an estimated \$130 million in damages during a 100-year event, 1% annual chance.



CURRENT STATUS

To date, all four upstream flood control dams have been completed. This includes PCUL1, PCUL2, PCUL4, and DCUL6. (See map.) Approximately 60% of the detention cells have also been completed. The two major pieces of the project yet to be completed are the detention cells and the levee.

There are 2.3 million cubic yards of excavation left on the detention cells. The design and permit application were recently submitted for approval. Construction of the cells is planned to start this fall and scheduled to be completed in early 2018. The estimated cost is \$7.3 million and may be divided into two separate phases for ease of construction and funds available. The mile-long levee just northwest of Grand Island is currently under final design. Construction on the levee is also planned to start this fall with an estimated cost of \$750,000. Another minor component still to be completed is the potential FEMA map revisions.

With an estimated cost of \$30 million, this large-scale project contains several moving components and elements, requiring extensive coordination between co-sponsors Central Platte NRD, the Nebraska Department of Natural Resources District, Natural Resources Development Fund, City of Grand Island, Hall County, Merrick County, as well as JEO Consulting Group and various permitting and regulatory agencies.



Detention cells holding water after a spring rain event.

Equipment used on PCUL1.

Groundwater Exchange Results



The CPNRD board of directors approved the first transactions of the Groundwater Exchange pilot program on April 1st. Sellers placed 30 locations online for leasing, with six buyers placing bids- three for irrigation and three for streamflow rights. The computer program matched the three irrigation bids with sellers in the eastern area of the District.

NERA was the consulting firm that developed the computer program, accepted the bids and provided CPNRD with results. General manager Lyndon Vogt reported to the board that NERA indicated that the bids varied greatly. Based on that information, Vogt said,

“If we would’ve had a few more buyers, they likely would’ve been matched with sellers.”

The CPNRD Groundwater Exchange is the first of its kind to allow temporary leasing of groundwater. The District’s Rules and Regulations regarding the transfers of groundwater irrigated acres are built into the computer program. Bids are based on acres, consumptive use, and streamflow depletion to the Platte River. Pre-approved buyers and sellers went online from March 21 to March 25 to place their asking price to temporarily lease their water or place bids to buy water for the 2016 growing season.

If the board decides to continue the Groundwater Exchange in the future, the bidding window would likely be open for a longer period of time and would begin in November after harvest.

For more information, visit www.market4water.com.



Chemigation Season... Are You Ready?

Chemigation/fertigation season is quickly approaching and in order to comply with Nebraska state law, chemigation/fertigation systems have to be inspected by the Central Platte NRD prior to any applications of fertilizer or chemicals.

Once a system has been inspected and a renewal application is sent in yearly, the system needs to be inspected every three years if you’re chemigating in the Central Platte NRD. If any changes are made to any part of the system (EX: new pump, new pivot), reinspection of that system is required.

For questions contact: Dan Clement, Sandy Noecker or Tricia Dudley at (308) 385-6282.

2016 Spring Prescribed Burns a Success



The Central Platte NRD assisted local landowners to conduct prescribed burns on approximately 8,132 acres this spring, the largest spring accomplishment to date.

The goals of the burns are to:

- increase native grassland species quality and quantity,
- provide for better wildlife habitat,
- decrease invasive Eastern Red Cedar trees.

The 2016 burns were very successful. Thousands of cedar trees were removed from the landscape as a result. This will have

long lasting benefits for the land, including sustained grazing capacity, and reduced threat of dangerous summer wildfire.

Range management specialist and burn boss, David Carr said that the average size of the burns was 842 acres. He said these larger burns can be conducted more safely because they often use good boundaries such as improved roads, large valleys, or crop fields.

“The larger burns are also more efficient and productive because the seed source needed for re-infestation of cedar trees is removed from a larger area; therefore, increasing the number of years that the burn will be effective,” said Carr.

New Effort

Central Platte NRD is teaming up with the Central Nebraska Rangeland Alliance to conduct most of the burns. This is being aided by a grant project funded by the Nebraska Environmental Trust. Through the grant, and NRD, funds are available to landowners in Central Platte for:

- Cedar cutting for fire break construction to make burns safer.
- Cedar cutting in the pasture to prepare the burn area for a good fire.
- Grazing deferment to build up enough grass for an effective burn.
- Burn Assistance through the use of a contractor.
- Cost Share assistance if an insured outside burn contractor is used.

In addition, Central Platte NRD continues efforts to form a private landowner burn association in the Grand Island surrounding area. This would be a cost-effective way for local landowners to get smaller wildlife habitat areas burned and enhance the quality of native Platte Valley tall grass meadows.

For more information about participating in this effort or about prescribed burns in general, contact David Carr. For more information on on cost share programs available, contact Kelly Cole.

David and Kelly may be reached by calling the CPNRD office at (308) 385-6282.



Stakeholders to Begin Second Increment of the Upper Platte Basin-Wide Integrated Management Plan

The Platte River Basin in Nebraska, upstream of the Kearney Canal, was determined to be over-appropriated in 2004 by the Nebraska Department of Natural Resources (Department). This determination required the Department and the natural resources districts located within the over-appropriated area (Central Platte, North Platte, South Platte, Tri-Basin and Twin Platte NRDs) to develop a basin-wide plan for joint integrated water resources management. In the fall of 2009, the first increment basin-wide plan for the Platte River Basin was approved and adopted by all parties.

The goal of the Plan was to set objectives to incrementally reduce the difference between current and fully appropriated levels of development within the basin. Although the goals are being met, the original plan required that the same parties develop a second increment within 10 years after the adoption of the first increment basin-wide plan. Stakeholders will begin the process in June with the second increment to be completed in the spring of 2019.

This process also invites the public to participate. The first meeting is scheduled for 1:00 p.m. on June 16, 2016, at the Monsanto Learning Center in Gothenburg, NE. Please refer to the Public Participation Plan available on the Department’s website at dnr.nebraska.gov/iwm.

Lake Helen Gets New Life

In 2012, Gothenburg city officials assembled a project team to address water quality conditions that had been degraded at Lake Helen for several years. Dense blooms of blue-green algae resulted from extremely high nutrient concentrations, shallow depths, poor water circulation, and high water temperatures.

To solve water quality concerns, the lake was drained in 2013 for improvements. 171,773 cubic yards of sediment were excavated, the shoreline was stabilized, underwater shoals were developed; a circulation system, pier and boat ramp were installed, and the dam was repaired.

To address sediment and nutrient loading concerns, the canal was eliminated as a lake water source, a bioswale was constructed to filter runoff, tall grass buffers were developed, and rocks were placed to deter waterfowl. The lake was treated with aluminum sulfate to precipitate phosphorus, a deeper well was installed to access lower phosphorus water and recreational fish were stocked.

To reduce costs, excavated sediment was spoiled within the body of the lake reducing the lake size to 19 acres; however, the lake volume was increased from four feet to over 10 feet. The improvements are very evident including an increase in water clarity from a few inches to over 15 feet, there are lower nutrient concentrations and reduced algae densities. Recreational fish were stocked in 2015.

The total cost of the project was \$1.8 million. The Central Platte NRD provided \$75,000 towards the project. Other funding partners include the Nebraska Game & Parks Commission, Nebraska Department of Environmental Quality, Nebraska Environmental Trust and the City of Gothenburg.



Representatives from the funding agencies join the ribbon-cutting ceremony on May 20, 2016. Jay Richeson, CPNRD board member & city council member is pictured in the center.

Nebraska Children's Groundwater Festival

Central Platte NRD coordinates the annual Nebraska Children's Groundwater Festival at Central Community College and College Park in Grand Island. The goal of the festival is to promote groundwater stewardship by providing the students of Nebraska knowledge to help them make personal choices about protecting groundwater quality and conserving groundwater use.

This year the festival was held on May 10th and had nearly 900 fourth and fifth-grade students in attendance. Each school attends five in-depth classroom activities, a stage show, and the Exhibit Hall tent to enjoy groundwater games and booths. There were 46 individuals and agencies that presented. Water educators and experts present stage shows, in-depth classroom activities and outside Exhibit Hall activities.

SCHOOLS IN ATTENDANCE

Axtell Elementary, Bryan & Pershing of Lexington, Central City Elementary & Nebraska Christian, Central Valley-Wolbach, Good Shepard Lutheran of Lincoln, Jefferson, Lincoln, Seedling Mile & Wasmer of Grand Island, McDaid-North Platte, New Hope Christian-Cairo, Overton Elementary, St. Marys-Ord, St. Michaels-Albion, St. Paul Elementary, Wood River Elementary

FUN FACTS

18 schools attended from 13 towns/cities across the state; including 848 students & 46 teachers. Largest school attending: Pershing of Lexington with 184 students. Smallest school attending: Good Shepard of Lincoln with 7 students. Traveled farthest: McDaid of North Platte, a two-hour trip.



Bob Manley Jr. presents "Febold Feboldson" for the last time. Manley has been portraying Febold as Nebraska's own Tall Tale Hero since 1996. Each year, students overwhelmingly selected his high energy class as one of their favorites.

Manley incorporated students in the presentations to help him act out his tales, while he taught the "real" history of groundwater and Nebraska.

HISTORY: The festival is intended to supplement groundwater education that students receive through their school curriculum by providing an event where professionals personally teach students how they work with water in their profession. This was the first groundwater festival to be formed, with over 30,000 students educated since 1988. The Nebraska Children's Groundwater Festival has been replicated in 41 states in the U.S.A., Mexico, Canada, India, & the United Kingdom.

SPONSORS: Central Platte NRD is the main sponsor of the event by providing \$10,000 in financial support and two staff members (Kelly Cole and Marcia Lee) that coordinate the event. The following donors provide additional support to allow students to attend the festival at no cost:

City of Grand Island Utilities, Fred Otradovsky, Kaufmann-Cummings Foundation, Case IH, a brand of CNH Industrial, CHI Health, Grand Island/Hall Co Visitors Bureau, Lee's Family Restaurant, Olsson Associates, Pepsi Bottling Group of Grand Island, Agricultural Services Inc., Ashton State Bank, Aurora Cooperative, Chief Industries Inc., Copycat Printing & Signs, Donna Wanitschke, Eakes Office Plus Inc., Hy-Vee, Grand Island Abstract Escrow & Title Co., Kiwanis A.M. Club, Kiwanis Club of Grand Island, Pioneer Hi-Bred International, Robinson Water Well Drilling, Wenzl Construction Co Inc., Zanadu Inc/Arbys, Coca-Cola of Grand Island, Grand Island Surgery Center, Ken Gnadt, Levanders, Middle Niobrara Natural Resources District, Orscheln Farm & Home, Roger and Julie Frandsen, Virginia Good

IN THIS ISSUE

- Front** Project Update: Upper Prairie/Silver/Moores
- Pg. 2** Groundwater Exchange Results, Chemigation Season...Are You Ready?
- Pg. 3** 2016 Spring Prescribed Burns Successful
- Pg. 4** Stakeholders to Begin Second Increment IMP, Lake Helen Gets New Life
- Pg. 5** Nebraska Children's Groundwater Festival

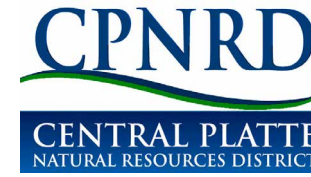
CPNRD LOGO UPDATED

Our board and staff recently selected a new logo to represent the Central Platte NRD. The new logo is an updated version of the logo designed in 1972 and adds the color green, which is more representative of the various responsibilities managed by the NRD.

PAST LOGO



NEW LOGO



Central Platte NRD 215 Kaufman Ave Grand Island NE 68803 T: (308) 385-6282 www.cpnrd.org

In Perspective

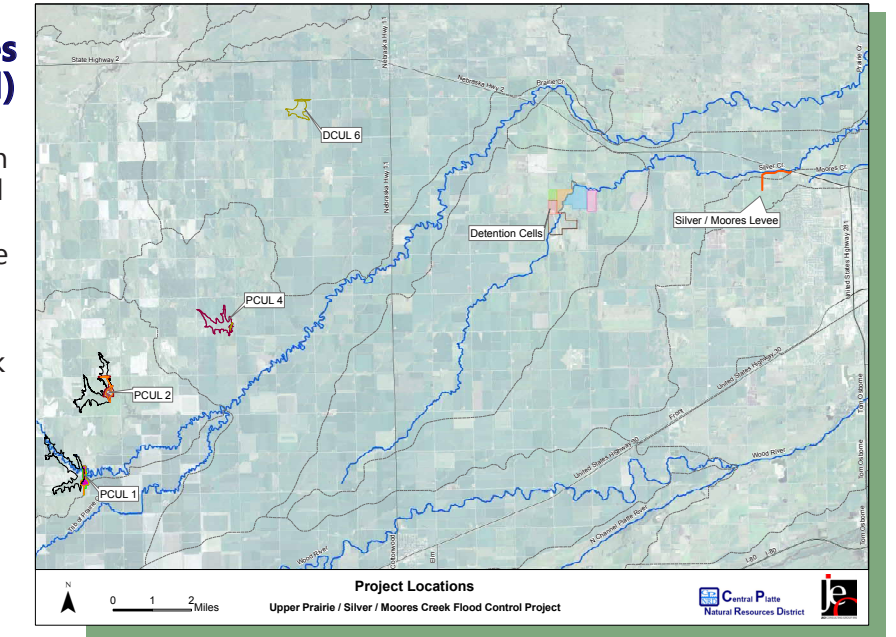
Central Platte Natural Resources District

PROJECT UPDATE

Upper Prairie/Silver/Moores Flood Control Project (PSM)

The Central Platte NRD began coordinating and managing design and construction of the PSM Flood Control Project in 2005. When completed, this project will provide many benefits, including:

- protect northwestern Grand Island from Prairie and Silver Creek flooding.
- reduce future flooding damages to crops, properties, and other infrastructures.
- eliminate an estimated \$130 million in damages during a 100-year event, 1% annual chance.



CURRENT STATUS

To date, all four upstream flood control dams have been completed. This includes PCUL1, PCUL2, PCUL4, and DCUL6. (See map.) Approximately 60% of the detention cells have also been completed. The two major pieces of the project yet to be completed are the detention cells and the levee.

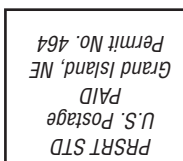
There are 2.3 million cubic yards of excavation left on the detention cells. The design and permit application were recently submitted for approval. Construction of the cells is planned to start this fall and scheduled to be completed in early 2018. The estimated cost is \$7.3 million and may be divided into two separate phases for ease of construction and funds available. The mile-long levee just northwest of Grand Island is currently under final design. Construction on the levee is also planned to start this fall with an estimated cost of \$750,000. Another minor component still to be completed is the potential FEMA map revisions.

With an estimated cost of \$30 million, this large-scale project contains several moving components and elements, requiring extensive coordination between co-sponsors Central Platte NRD, the Nebraska Department of Natural Resources District, Natural Resources Development Fund, City of Grand Island, Hall County, Merrick County, as well as JEO Consulting Group and various permitting and regulatory agencies.



Detention cells holding water after a spring rain event.

Equipment used on PCUL1.



Central Platte Natural Resources District
215 Kaufman Avenue
Grand Island NE 68803-4915
www.cpnrd.org



Return Service Requested

Groundwater Exchange Results



The CPNRD board of directors approved the first transactions of the Groundwater Exchange pilot program on April 1st. Sellers placed 30 locations online for leasing, with six buyers placing bids- three for irrigation and three for streamflow rights. The computer program matched the three irrigation bids with sellers in the eastern area of the District.

NERA was the consulting firm that developed the computer program, accepted the bids and provided CPNRD with results. General manager Lyndon Vogt reported to the board that NERA indicated that the bids varied greatly. Based on that information, Vogt said,

“If we would’ve had a few more buyers, they likely would’ve been matched with sellers.”

The CPNRD Groundwater Exchange is the first of its kind to allow temporary leasing of groundwater. The District’s Rules and Regulations regarding the transfers of groundwater irrigated acres are built into the computer program. Bids are based on acres, consumptive use, and streamflow depletion to the Platte River. Pre-approved buyers and sellers went online from March 21 to March 25 to place their asking price to temporarily lease their water or place bids to buy water for the 2016 growing season.

If the board decides to continue the Groundwater Exchange in the future, the bidding window would likely be open for a longer period of time and would begin in November after harvest.

For more information, visit www.market4water.com.



Chemigation Season... Are You Ready?

Chemigation/fertigation season is quickly approaching and in order to comply with Nebraska state law, chemigation/fertigation systems have to be inspected by the Central Platte NRD prior to any applications of fertilizer or chemicals.

Once a system has been inspected and a renewal application is sent in yearly, the system needs to be inspected every three years if you’re chemigating in the Central Platte NRD. If any changes are made to any part of the system (EX: new pump, new pivot), reinspection of that system is required.

For questions contact: Dan Clement, Sandy Noecker or Tricia Dudley at (308) 385-6282.

2016 Spring Prescribed Burns a Success



The Central Platte NRD assisted local landowners to conduct prescribed burns on approximately 8,132 acres this spring, the largest spring accomplishment to date.

The goals of the burns are to:

- increase native grassland species quality and quantity,
- provide for better wildlife habitat,
- decrease invasive Eastern Red Cedar trees.

The 2016 burns were very successful. Thousands of cedar trees were removed from the landscape as a result. This will have

long lasting benefits for the land, including sustained grazing capacity, and reduced threat of dangerous summer wildfire.

Range management specialist and burn boss, David Carr said that the average size of the burns was 842 acres. He said these larger burns can be conducted more safely because they often use good boundaries such as improved roads, large valleys, or crop fields.

“The larger burns are also more efficient and productive because the seed source needed for re-infestation of cedar trees is removed from a larger area; therefore, increasing the number of years that the burn will be effective,” said Carr.

New Effort

Central Platte NRD is teaming up with the Central Nebraska Rangeland Alliance to conduct most of the burns. This is being aided by a grant project funded by the Nebraska Environmental Trust. Through the grant, and NRD, funds are available to landowners in Central Platte for:

- Cedar cutting for fire break construction to make burns safer.
- Cedar cutting in the pasture to prepare the burn area for a good fire.
- Grazing deferment to build up enough grass for an effective burn.
- Burn Assistance through the use of a contractor.
- Cost Share assistance if an insured outside burn contractor is used.

In addition, Central Platte NRD continues efforts to form a private landowner burn association in the Grand Island surrounding area. This would be a cost-effective way for local landowners to get smaller wildlife habitat areas burned and enhance the quality of native Platte Valley tall grass meadows.

For more information about participating in this effort or about prescribed burns in general, contact David Carr. For more information on on cost share programs available, contact Kelly Cole.

David and Kelly may be reached by calling the CPNRD office at (308) 385-6282.



Stakeholders to Begin Second Increment of the Upper Platte Basin-Wide Integrated Management Plan

The Platte River Basin in Nebraska, upstream of the Kearney Canal, was determined to be over-appropriated in 2004 by the Nebraska Department of Natural Resources (Department). This determination required the Department and the natural resources districts located within the over-appropriated area (Central Platte, North Platte, South Platte, Tri-Basin and Twin Platte NRDs) to develop a basin-wide plan for joint integrated water resources management. In the fall of 2009, the first increment basin-wide plan for the Platte River Basin was approved and adopted by all parties.

The goal of the Plan was to set objectives to incrementally reduce the difference between current and fully appropriated levels of development within the basin. Although the goals are being met, the original plan required that the same parties develop a second increment within 10 years after the adoption of the first increment basin-wide plan. Stakeholders will begin the process in June with the second increment to be completed in the spring of 2019.

This process also invites the public to participate. The first meeting is scheduled for 1:00 p.m. on June 16, 2016, at the Monsanto Learning Center in Gothenburg, NE. Please refer to the Public Participation Plan available on the Department’s website at dnr.nebraska.gov/iwm.

Lake Helen Gets New Life

In 2012, Gothenburg city officials assembled a project team to address water quality conditions that had been degraded at Lake Helen for several years. Dense blooms of blue-green algae resulted from extremely high nutrient concentrations, shallow depths, poor water circulation, and high water temperatures.

To solve water quality concerns, the lake was drained in 2013 for improvements. 171,773 cubic yards of sediment were excavated, the shoreline was stabilized, underwater shoals were developed; a circulation system, pier and boat ramp were installed, and the dam was repaired.

To address sediment and nutrient loading concerns, the canal was eliminated as a lake water source, a bioswale was constructed to filter runoff, tall grass buffers were developed, and rocks were placed to deter waterfowl. The lake was treated with aluminum sulfate to precipitate phosphorus, a deeper well was installed to access lower phosphorus water and recreational fish were stocked.

To reduce costs, excavated sediment was spoiled within the body of the lake reducing the lake size to 19 acres; however, the lake volume was increased from four feet to over 10 feet. The improvements are very evident including an increase in water clarity from a few inches to over 15 feet, there are lower nutrient concentrations and reduced algae densities. Recreational fish were stocked in 2015.

The total cost of the project was \$1.8 million. The Central Platte NRD provided \$75,000 towards the project. Other funding partners include the Nebraska Game & Parks Commission, Nebraska Department of Environmental Quality, Nebraska Environmental Trust and the City of Gothenburg.



Representatives from the funding agencies join the ribbon-cutting ceremony on May 20, 2016. Jay Richeson, CPNRD board member & city council member is pictured in the center.